

A WORD FROM THE DIRECTORS

Hilary Baker ...

I first joined an amateur dramatic group in the late sixties as a teenager in Bromley, Kent. After a gap of twenty years I joined the Chideock Players with my husband Nick, in 1993, having just moved to the village. Roles have included Mrs. Pearce in Shaw's *'Pygmalion'*, Miss Tracey in J. B. Priestley's *'Mystery at Greenfingers'* and Delia in Ayckbourn's *'Bedroom Farce'*. This, with Natalie, is a first attempt at directing/producing. It is very interesting to watch a play unfold and grow from the other side, as it were.

I do hope you enjoy the play – not least, that it makes you laugh!

Natalie Williams ...

I joined the Chideock Players in 1988 and since then I have undertaken various roles, both on and off stage. My most enjoyable have come from our pantomime productions, the latest of which had me portraying an evil Witch! I fancied having a go at directing and approached Hilary wondering if she would like to co-direct a play with me. The next thing I knew she had located the script for the stage play *'Allo 'Allo*. It's certainly been a challenge, from casting to costuming to staging, not least because everyone knows the show and what the characters should look like.

and finally

We would both like to thank the cast for putting up with us as we tackled the production of our first play and for all their support. We are indebted to everyone who has helped us pull the show together. Many, many thanks to them all!

We hope that you all enjoy the show and thanks for supporting us.

STORY BACKGROUND

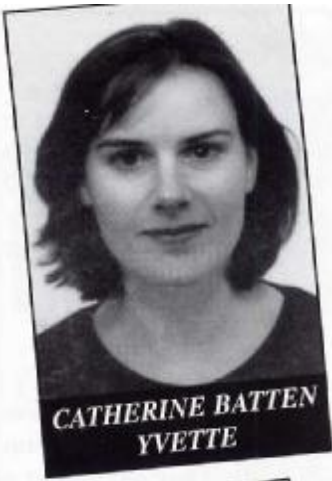
During World War II, the French village of Nouvion is invaded and commandeered by the German army. The invading army installs a commandant for the town, Colonel Von Strohm and his assistant. The two decide to take the opportunity to line their pockets with as much confiscated booty as possible.

Meanwhile, the German high command has sent a Gestapo officer, Herr Flick, to the town to commandeer the most precious works of art, in order to present them to the Fuhrer in Germany. Unfortunately, one of the known works in question, the famous painting of the "Fallen Madonna" (with the big boobies) has already gone missing,

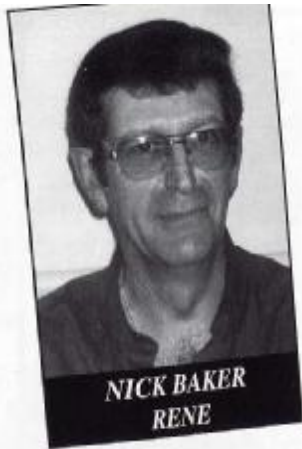
Rene Artois is the owner of "Cafe Rene", a small cafe in town. He dislikes what the war and the Germans have done to his town, so he ends up (reluctantly) cooperating with the French Resistance. The Resistance want him to stop dealing with the Germans, the Germans want him to stop dealing with the Resistance. A healthy standoff.

Cafe Rene becomes a crossroads and junction for the Resistance, who are constantly hiding downed British airmen. Rene himself deals with not-unwelcome amorous advances from his beautiful waitresses, as well as various ridiculous situations. What is a Frenchman to do?

Allo 'Allo



CATHERINE BATTEN
YVETTE



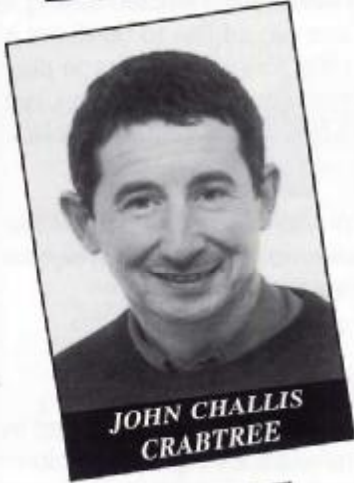
NICK BAKER
RENE



MAGGIE IMBER
EDITH



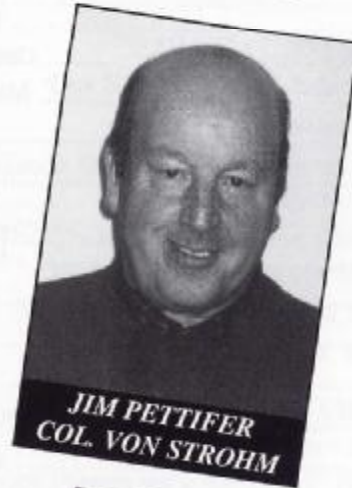
TAZ MOORES
MIMI



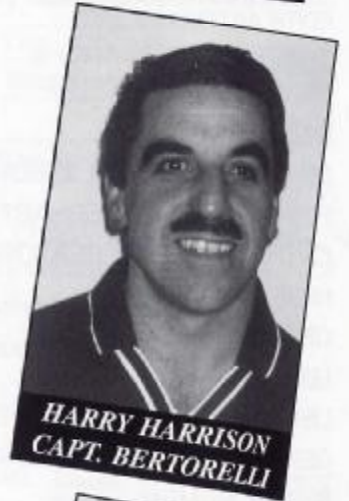
JOHN CHALLIS
CRABTREE



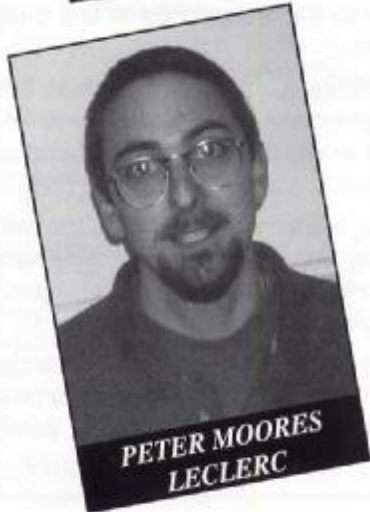
KEITH READINGS
GRUBER



JIM PETTIFER
COL. VON STROHM



HARRY HARRISON
CAPT. BERTORELLI



PETER MOORES
LECLERC



MARILYN HARRISON
MICHELLE



CHRIS LAMBERT
SCHMELLING



LEIGH CONLEY
FLICK



TRACEY LUNT
HELGA

SYNOPSIS OF SCENES

ACT I

Scene 1: Rene's Cafe
 Scene 2: The Larder
 Scene 3: The Colonel's Office
 Scene 4: Flick's Quarters
 Scene 5: Rene's Cafe
 Scene 6: A side room
 Scene 7: Rene's Cafe

15 minute Interval

ACT II

Scene 1: Rene's Cafe
 Scene 2: The Colonel's Office
 Scene 3: Flick's Quarters
 Scene 4: The Colonel's Office
 Scene 5: Rene & Edith's Bedroom
 Scene 6: Cinema
 Scene 7: Rene's Cafe
 Scene 8: The Larder
 Scene 9: Rene's Cafe

CAST IN ORDER OF APPEARANCE

RENE ARTOIS Nick Baker
 EDITH ARTOIS Maggie Imber
 YVETTE CARTE-BLANCHE Catherine Batten
 MICHELLE DUBOIS Marilyn Harrison
 MIMI LE BONQUE Taz Moores
 COLONEL KURT VON STROHM Jim Pettifer
 PRIVATE HELGA GEERHART Tracey Lunt
 CAPTAIN ALBERTO BERTORELLI Harry Harrison
 HERR OTTO FLICK Leigh Conley
 OFFICER CRABTREE John Challis
 LECLERC Peter Moores
 LIEUTENANT HUBERT GRUBER Keith Readings
 GENERAL VON SCHMELLING Chris Lambert
 BRITISH AIRMEN Dewi Lambert & Ross Jones
 GERMAN SOLDIERS Dewi Lambert & Tony Brown
 PEASANTS Frances Brown & Guy Mills
 PIANIST Ken Armitage (Chideock) & Mike Whatmore (Bridport)
 RADIO VOICE Ross Jones
 SWEDISH VOICE Dewi Lambert



*New members are always welcome to join the Chideock Players
 either on stage or behind the scenes.*

*If you would like to join, please contact:
 Hilary Baker, Chairman on (01297) 489555*

or

Catherine Batten, Secretary on (01308) 897944



THE CREW

STAGE MANAGER Sarah Burge
 ASSISTANT TO STAGE MANAGER Karen Cheeseman
 STAGE CONSTRUCTION Nick Baker, John Challis, Mark Williams
 PROMPT Diana Swann
 MILITARY COSTUMES SUPPLIED BY G10 Artemis
 WARDROBE Barbara Whatmore, Gwyneth Winter, Deborah Mills
 SET PAINTER Lesley Rigby
 PROPERTIES Diana Swann, Ruth Wrixton, Diana Dowle
 LIGHTING SUPPLIED BY Chesil Theatre Supplies Ltd.
 MAKE UP Moira Lucas, Marilyn Harrison, Taz Moores
 PROGRAMME, POSTER & TICKET DESIGN Natalie Williams
 PROGRAMME Creeds the Printers
 FRONT OF HOUSE MANAGER Myrtle Cheeseman and friends
 BOX OFFICE Hilary Baker, Bridport Arts Centre

SPECIAL THANKS TO

Our Sponsors – Mr. & Mrs. Nigel Whittaker;
 all our advertisers;

Chideock Hill Stores & Chideock Spar Shop for the sale of
 tickets;

The Chideock Players President – Mr. Chris Walliker
 for arranging sponsorship and advertising;
 Sue Herman for the loan of the stage extensions;
 and you, our audience, for supporting us.

A BRIEF HISTORY OF THE PLAYERS

by a founder member – Mrs. Pat Hussey;

The Chideock Players were founded in 1947 by Mrs. Josephine White. For many years before there had been an entertainment group in the village run by the schools or churches, and after 1919 by the Women's Institute.

There are still a few of the original players in the village. I remember Mrs. Veronica Bickford starring as 'Miranda' in our 1957 production, she was a mermaid who was carried across the stage by Gilbert Legg to show off her wonderful mermaid's tail. Derek Taylor was always available as a policeman and he was also our reliable curtain puller. John Newman made the lighting box which became known as the 'Doctor Who' box for many years.

So many local people were players – Mrs. Weld, Mrs. Kirby, Trixie Higham, Jeff Chattin, Terry Lunt, Maude White, Anne Webb, Jim Burge, Jimmy Doyle, Ann Barnes and Melody Newman. Our president for many years was Leslie Fussell. There are many, many more names I cannot remember without a 'prompt'!

We had many happy hours rehearsing and lots of fun putting on some terrific shows. Unfortunately, all good things come to an end, and the players disbanded in the late seventies for a period of five years.

I would like to wish the new Chideock Players every success in 'Allo 'Allo, and long may they go on entertaining the village with their shows and wonderful pantomimes.